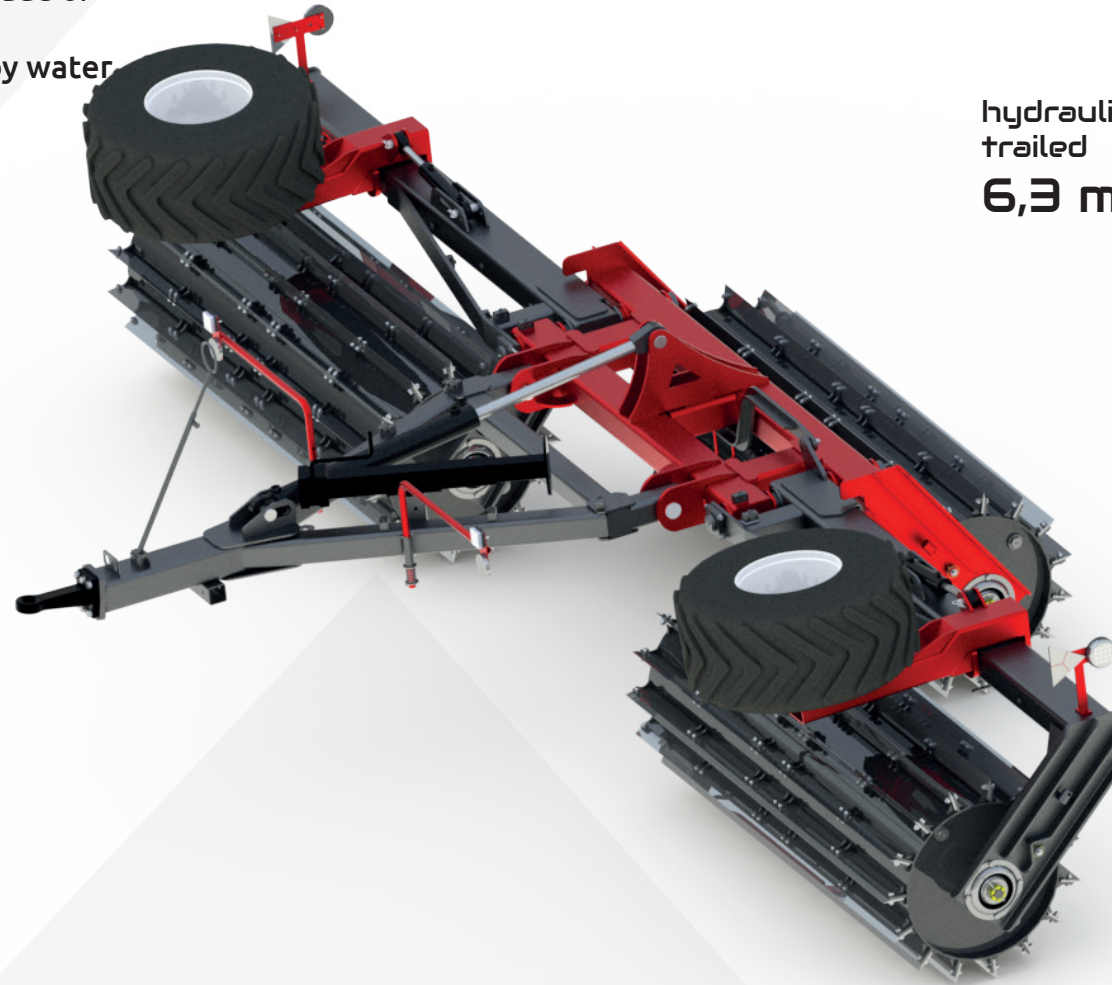


# GLADIO

WORKING POSITION

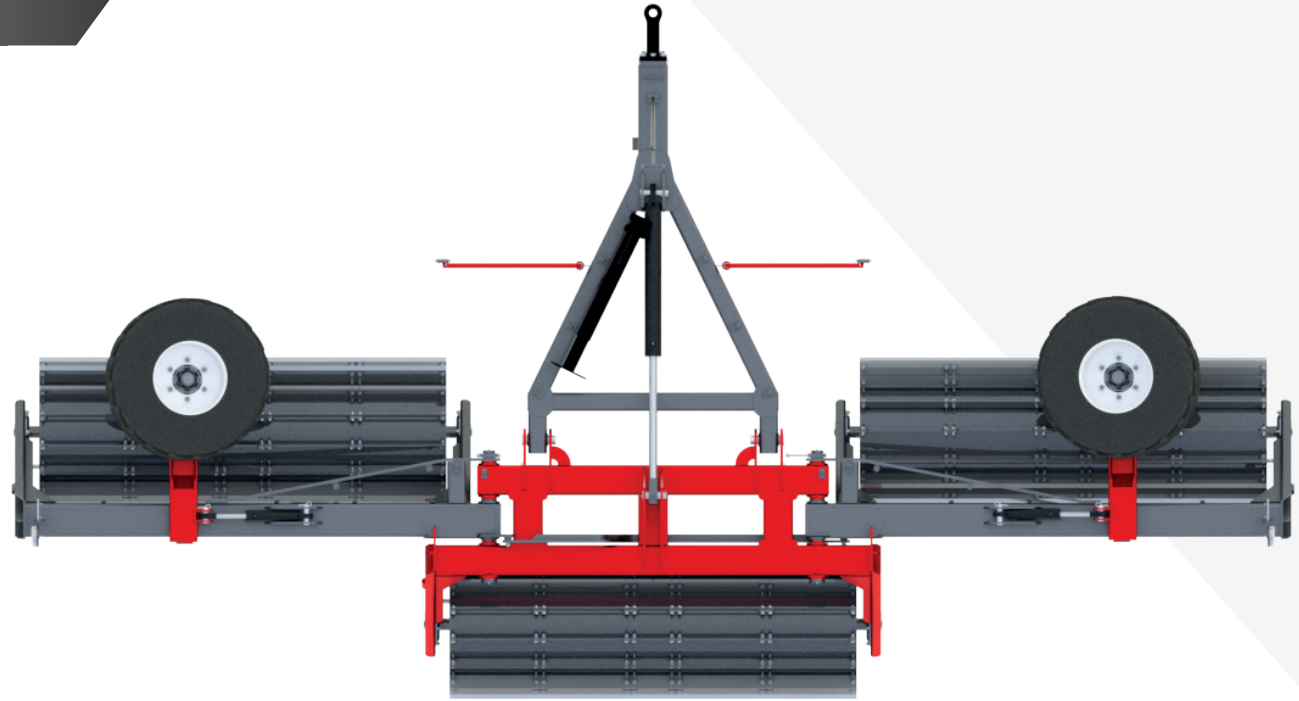
## Available Rings

- » Sharp roller  $\Phi 840$  mm
- 15 pieces of knives made of special Hardox steel
- adjustable weight by water



hydraulically foldable,  
trailed

**6,3 m**



SPECIFICATION		dimensions
m	Working width	6,3
≈mm	Transport width	2790
≈mm	Transport length	4640
≈mm	Transport height	1580

GLADIO



# SHARP ROLLER

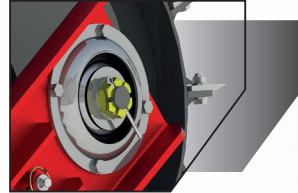
 **GLADIO**

## Standard

- straight upper | lower hitch
- stable support foot
- frame with 1 cylinder
- a strip blocking the frame segments
- cylinders extending the wheels, facilitating the unfolding of the machine
- road wheels: 400/60-15.5
- 2 flood and drain plugs on each side
- sharp roller  $\Phi 840$  mm, pipe  $D=610$  with 15 knives mounted on it, made of special hardox steel, knives are arranged along the steel pipe every 24 degrees
- ball bearing with rubber shock absorber
- patent for a unit for grinding post-harvest residues and catch crops
- varnish coating with improved parameters
- securing the working elements for the time of transport by means of pins




hydraulically foldable,  
trailed  
**6,3 m**

**BALL BEARING**  
with rubber shock absorber  
in standard



## About the machine

GLADIO, cultivation and meadow rollers are hydraulically foldable and trailed modern machines, in which we use a sharp roller with a diameter of 840 mm. they are intended for post-harvest cultivation of fields and for use after catch crops.  $D=610$  pipe with 15 special hardox steel knives mounted on it. The knives are arranged along the steel pipe every 24 degrees. Each section of the roller has flood plugs that, flooded with water, regulate the weight of the machine. Recommended working speed 17-23 km/h. In addition, each working element has a transport protection, where a pin inserted between the hole in the frame and the shaft section locks it. These rollers have a simplified unfolding system, where after unlocking the beam blocking the frame segments, the machine unfolds the side sections when reversing. Then all roller sections are lowered by cylinder. The rollers can also be successfully used for post-harvest cultivation in order to accelerate the decomposition of straw and post-harvest residues as well as the germination of shed seeds, including weed seeds. These machines are also used on grasslands.

SPECIFICATION	hydraulically foldable, trailed
 Working width [m]	6,3
<b>ID</b> Catalog number [id]	1760
 Required power [HP]	120
 Weight [kg]	2850
OPTIONS	
LED lighting	
drawbeam	